

Basic Configuration of an Alcatel OmniOffice-E



This document should help you to set up a demonstration environment for use an Omni Office E. It is not my intension to replace any existing and official documents.

Acknowledgements: Olaf Lindenau of Alcatel eND
Rene Princz-Schelter of Alcatel eND

Without their assistance I would not be able to finish this document that easy.

Equipment:

- 1x Office E PC-Link Release 4.0 with min. 1x IPLAN board
- 1x Alcatel Advanced Reflex IP
- 1x Alcatel Dect Base UA
- 1x Alcatel Dect Phone
- 1x OmniCore 5010



Software:

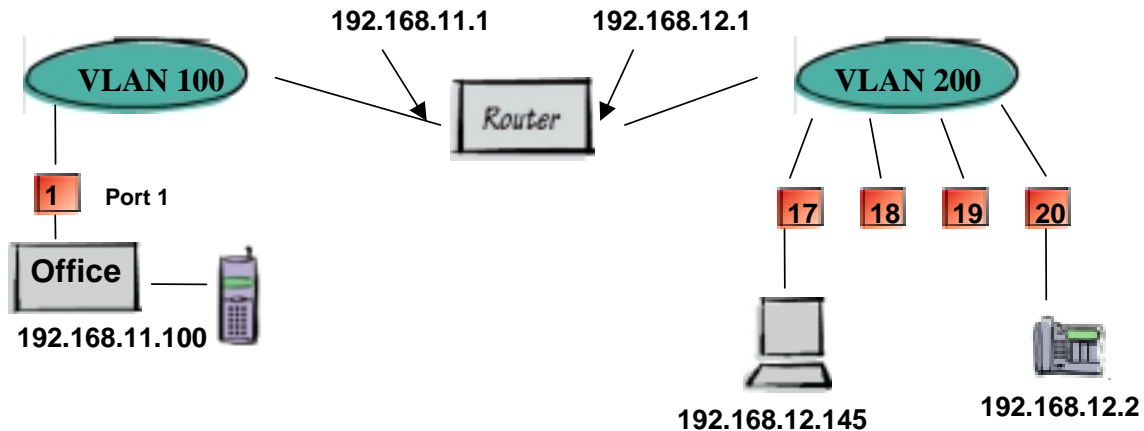
- PIM Phony → Soft Telephone Application
- PMMC → Configuration Tool for Office

When having the installation finished, you will be able to use an IP telephone to send and/or receive phone calls. Also by using the DECT phone or the Pim Phony application you can do phone calls in the same manner and I was surprised by the high quality, which I didn't expect when I started with the setup.



Here's the logical and physical layout how the used equipment is connected together and also to see two Vlan separated with a router.

OC-5010



OmniCore Configuration

```
PR-1000> vlan 100 tag 100 crea
PR-1000> vlan 100
PR-1000/vlan=100> ip 192.168.11.1 mask /24 crea
PR-1000/vlan=100> ..
```

```
PR-1000> vlan 200 tag 200 crea
PR-1000> vlan 200
PR-1000/vlan=200> ip 192.168.12.1 mask /24 crea
PR-1000/vlan=200> ..
```

```
PR-1000> vlan 100
PR-1000/vlan=100> ethernet-mem 1 default add
PR-1000/vlan=100> ..
```

```
PR-1000> vlan 200
PR-1000/vlan=200> Ethernet-mem 17-20 default add
PR-1000/vlan=200> ..
```

```
PR-1000> ip rip
PR-1000/ip/rip> status enable
PR-1000/ip/rip> show
RIP Status           :enable
Host Route Support   :enable
Redistribution Status :disable
Route Tag             :0
Force Holddown Timer :0
```

Basic Configuration of an Alcatel OmniOffice-E



```
TTL Value :1
PR-1000/ip/rip> ..
PR-1000/ip> ..

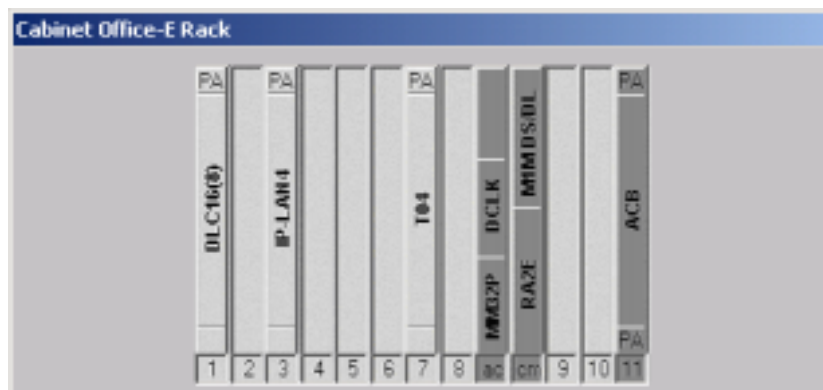
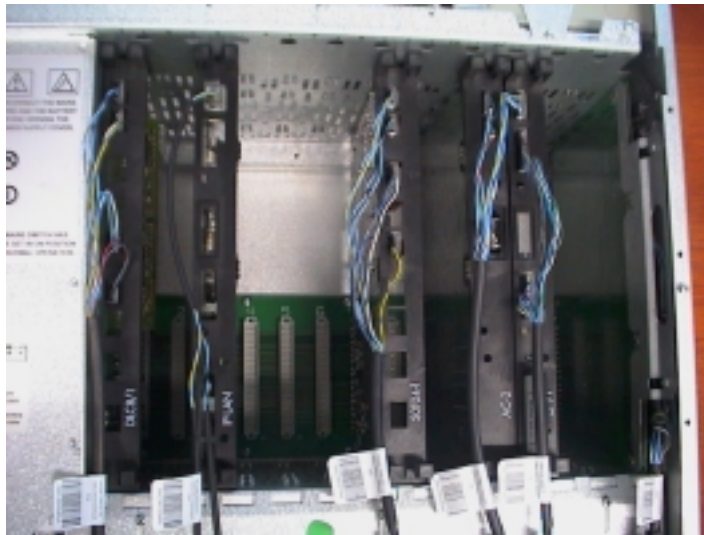
PR-1000> vlan 100 ip 192.168.11.1
PR-1000/vlan=100/ip=192.168.11.1> rip
PR-1000/vlan=100/ip=192.168.11.1/rip> status enable
PR-1000/vlan=100/ip=192.168.11.1/rip> /

PR-1000> vlan 200 ip 192.168.12.1 rip status enable

PR-1000> save config
Saving running configuration to < config >.
```

Review of OmniOffice Hardware Setup

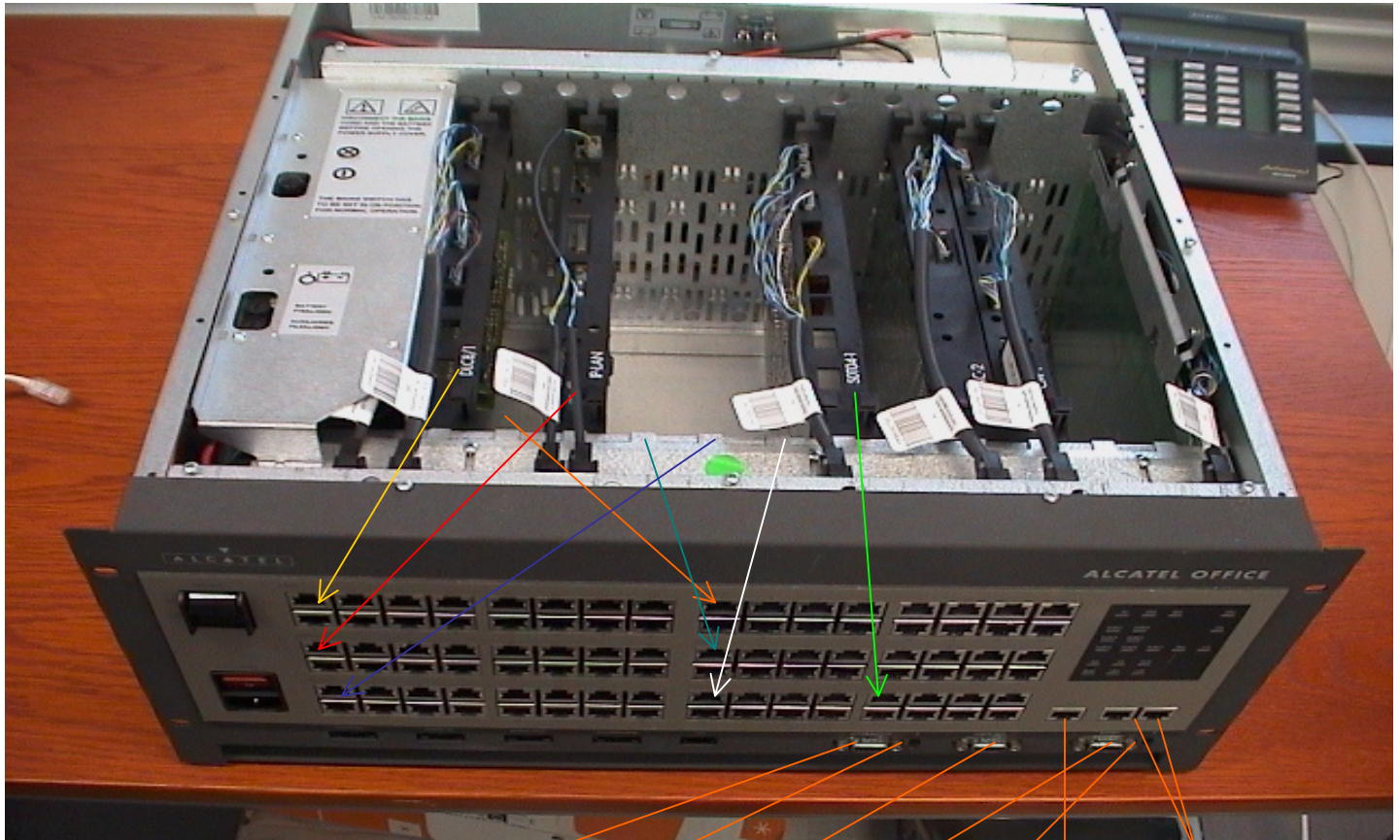
When opening the upper plate you should see an inlet similar to this.



Basic Configuration of an Alcatel OmniOffice-E



Don't get confused by interpreting Ports vs. Slots. In following figure I'm going to explain the relation of slots to ports.



Accounting Remote/Local Switch Voice Mail System Remote/Local Switch Primary Rate CTI Server

Accounting
Remote/Local Switch
Voice Mail
System
Remote/Local Switch
Primary Rate
CTI Server

Basic Configuration of an Alcatel OmniOffice-E



Each Slot Number refers to Port Number Arrangements. For example, if you have a DLC8 card in slot 1, you have 8 outlet (RJ-45) from Port Arrangement Number 1 (Port 1). By using a DLC16 card in Slot 1, you can use all 16 outlets of Port Arrangement Number 1. Following matrix is giving you an overview what can be installed and which slot is allowed to hold the card.

Configuration overview of 19" Version of Alcatel Office E													
Boardtype	Slot 1	Slot 2	Slot 3	Slot 4	Slot 5	Slot 6	Slot 7	Slot 8	AC	CM	Slot 9	Slot 10	ACB
AC-2									X				
MM32P-1									X				
CM-1										X			
AM											X		
4610-II												X	
4610-IV												X	
ACB													X
T2						X	X	X					
DLT2						X	X	X					
T02	X	X	X	X	X	X	X						
S0T08						X	X						
S0T04	X	X	X	X	X	X	X						
DLT08						X	X						
DLT04	X	X	X	X	X	X	X						
SLC8	X	X	X	X	X	X	X						
DLC8	X	X	X	X	X	X	X						
DLC16	X	X	X	X	X								
IP LAN 4	X	X	X	X	X								
IP LAN 8	X	X	X	X	X								
IP LAN 16	X	X	X	X	X								

Boardtype Usage

AC-2	Control Unit for wait message, background music, doorphone
MM32P-1	part of AC-2
CM-1	Control unit for MMC PC
AM	CSTA application (Ethernet 10 Base T)
4610-II	Secretary function incl automatic transfer
4610-IV	
T2	
DLT2	
T02	T0 interfaces (30B channels + 1D channel) for ISDN
S0T08	
DLT08	
DLT04	
SLC8	Interfaces for analog Z terminals
DLC8	Interface for Reflex Station and DECT 4070 base station
DLC16	Interface for Reflex Station and DECT 4070 base station
IP LAN 4	
IP LAN 8	
IP LAN 16	



Omni Office Configuration (Wiring)



OC-5010

S0

Connect DECT phone and/or any other UA Devices on Port Arrangement No. 1 (verify how many ports can use, for example DLC8 can only provide outlets (RJ-45) one to eight)

The OmniCore 5010 is connected to referred Port Arrangement No. 3, as the IP LAN card is attached to slot 3. Also make sure to use a active port regarding the IP LAN card version.

S0 Connection is done in this example with Port Arrangement No. 7, as S0T04 card is attached to slot 7.

Basic Configuration of an Alcatel OmniOffice-E

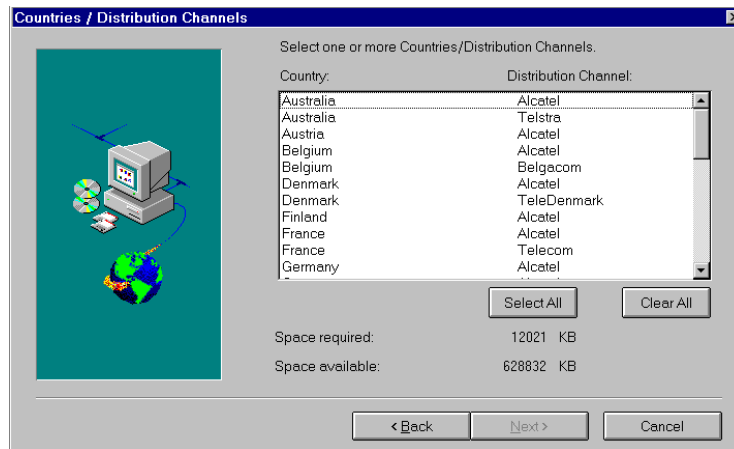


This is mostly everything to be done with physical connections to the Omni Office E

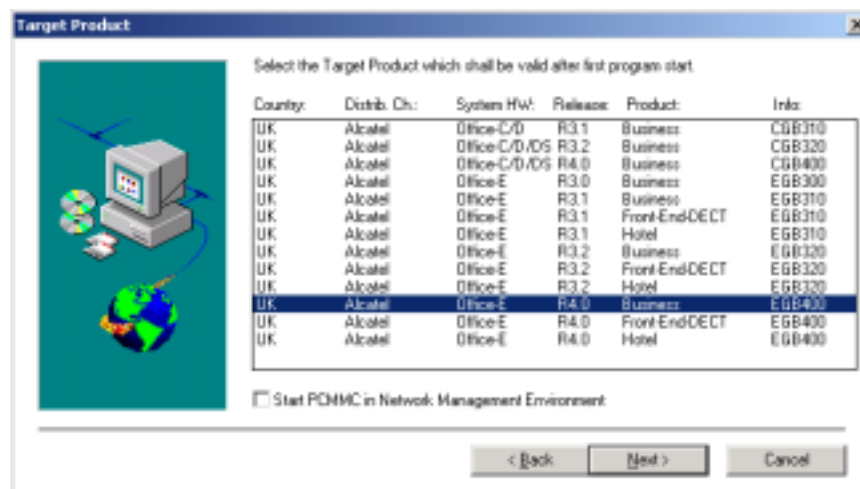
Omni Office Configuration (Software)

Attention: When using a German Version of OmniOffice you have also to use the German Version of PCMMC software. It may work with a English Version, but you will experience some anomalies with board assignments, saying IP LAN will be reflected in the software as "Non-Standard".

I've used MMC PC Version 4.22 (13.5), which is as a self-extracting zip file, named 422_13_5.EXE. When having the file extracted open DISK1 and double click setup.exe. You will get a Welcome message. Continue with next until you get to Countries/Distribution Channels.



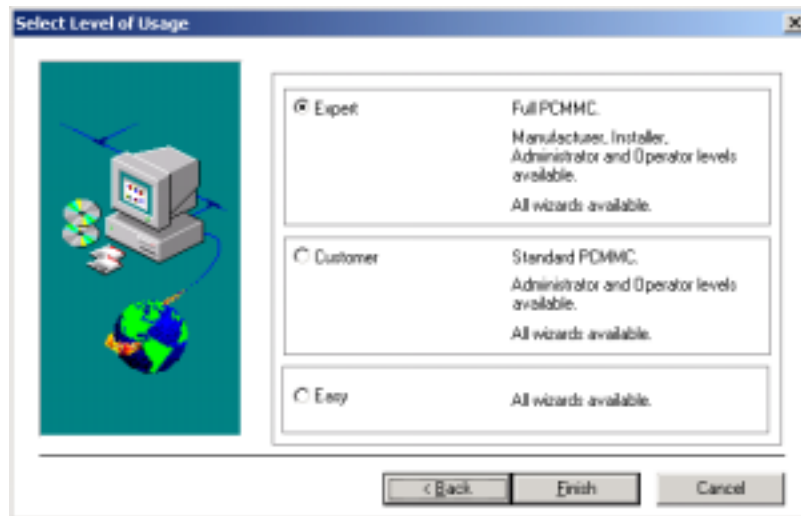
Select the Country, where you have received the Omni Office. In my case, I have used Germany as country. Click on next you can choose the target.



Basic Configuration of an Alcatel OmniOffice-E

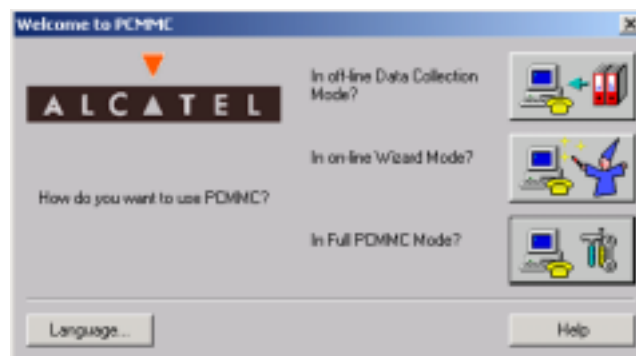


Our Omni Office was shipped with Release 4.0 and refers to Business Unit. Also I did the expert installation.

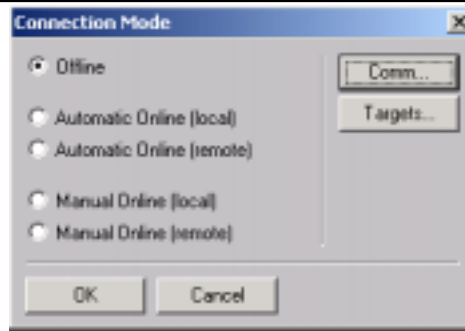


When clicking on Finish, the automatic setup is running.

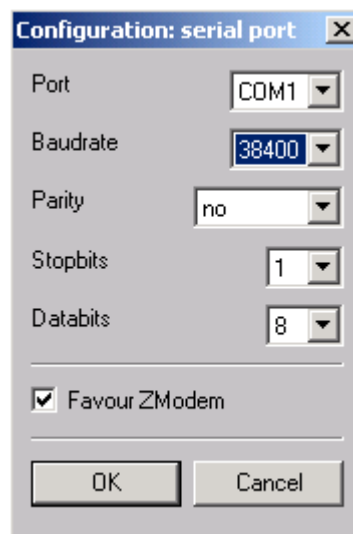
Once, you have finished the installation you can launch the application. Here you have the possibility to choose the language. Again, I would like to advice to use the same language as the Distribution channel in the beginning of the software installation. Having delivered from Germany than use German language of PCMMC. The only reason I have used the English version was the purpose to have an international OmniTip for you.



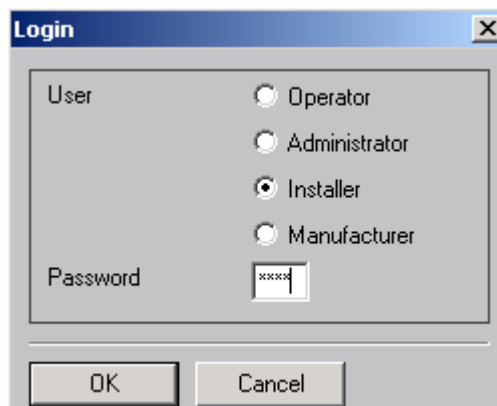
Click on Full PCMMC Mode and start with local Online Connection Mode. You have to have the console cable connected to "system" DB9 connector. The switch close by needs to be set to local. The cable type is 1:1



You may have to set the serial port configuration to bellows settings.



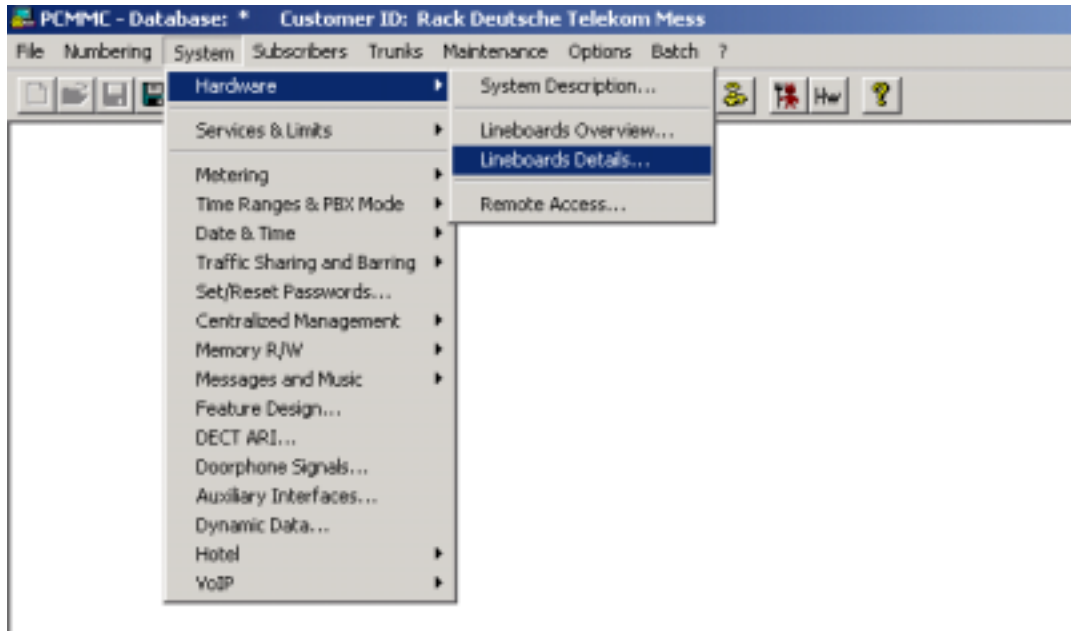
Login as Installer. The password is 1064



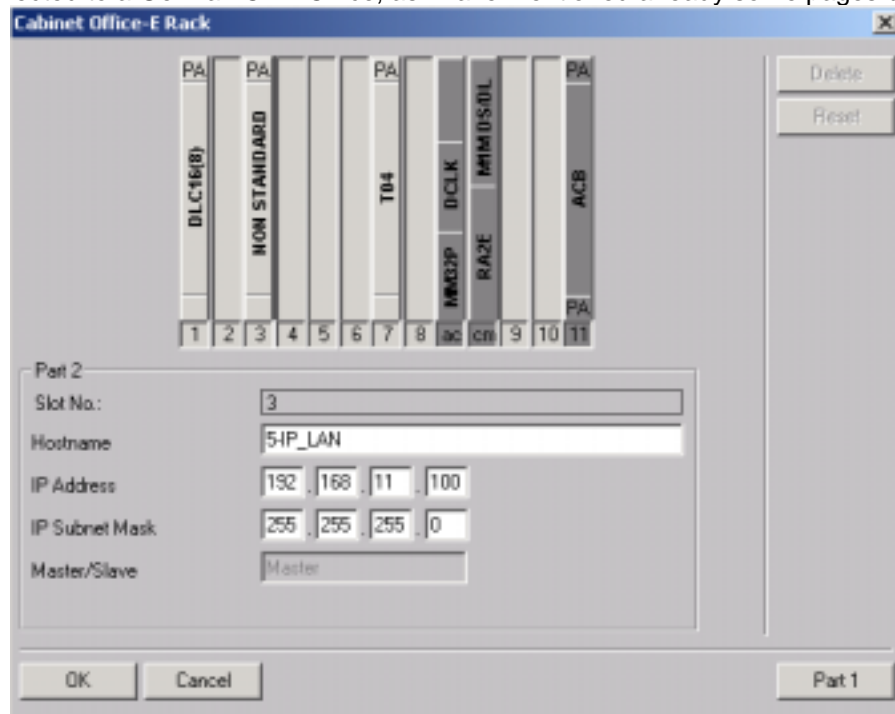
Basic Configuration of an Alcatel OmniOffice-E



To configure the IP Address you should go via System – Hardware – Lineboards Details.



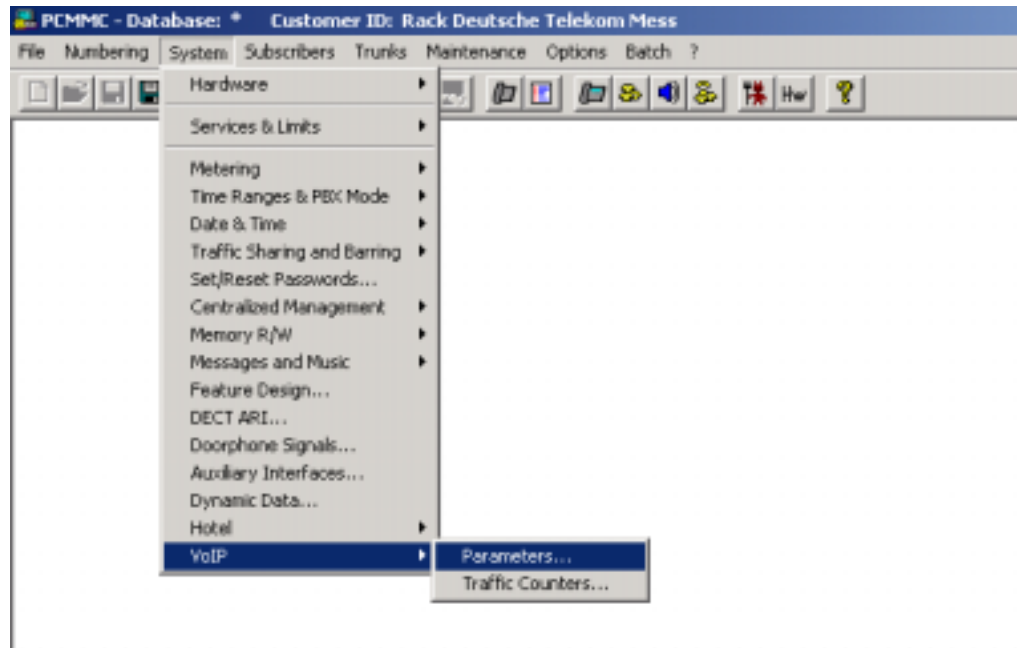
Click on IP-LAN 4, here in Slot 3 (the reason you see here NON STANDARD) is because I have used an English MMC version connected to a German OmniOffice, as I have mentioned already some pages before.



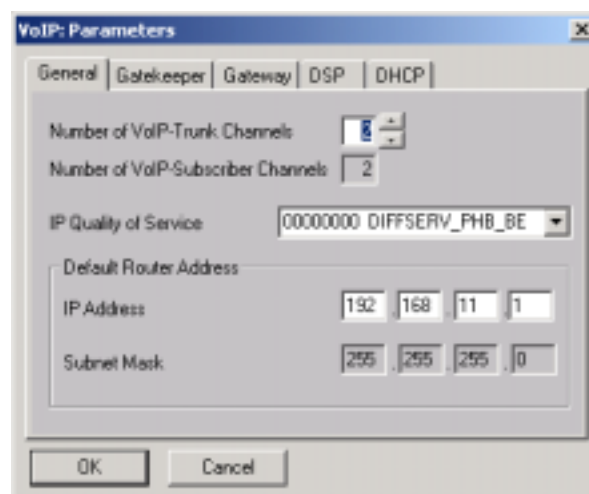
Basic Configuration of an Alcatel OmniOffice-E



Now it's time to set Voice over IP Parameter to have Quality of Service available. To get there, click on System – VoIP – Parameters.



In General Section of VoIP Parameters set following
Number of VoIP-Trunk Channels -> **2**
Number of Voip-Subscriber Channel is preset to **2**
IP Service Quality -> **0000000 DIFFSERV_PHB_BE**
Default router -> **192.168.11.1** (as in VLAN 1, based on Layout on the first page)



Basic Configuration of an Alcatel OmniOffice-E



On Gatekeeper tab, have integrated Gatekeeper **marked**.



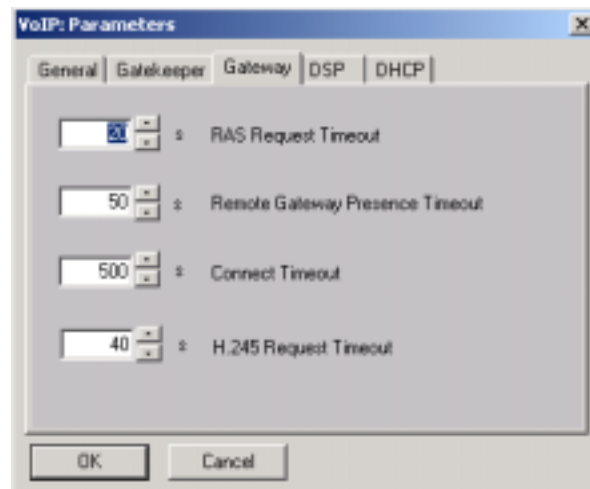
Gateway tab shows the default settings and should be kept.

RAS Request Timeout -> **20**

Remote Gateway Presence Timeout -> **50**

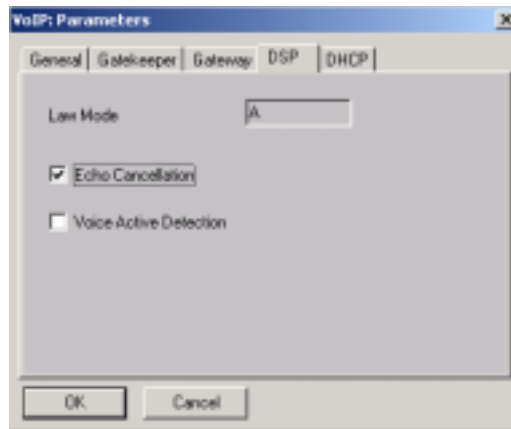
Connect Timeout -> **500**

H.245 request Timeout -> **40**

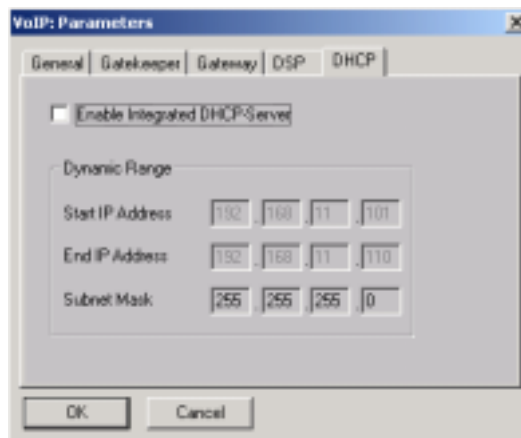


On DSP tab on the next page, just have echo cancellation **marked**, if you do not want to hear yourself on the speaker

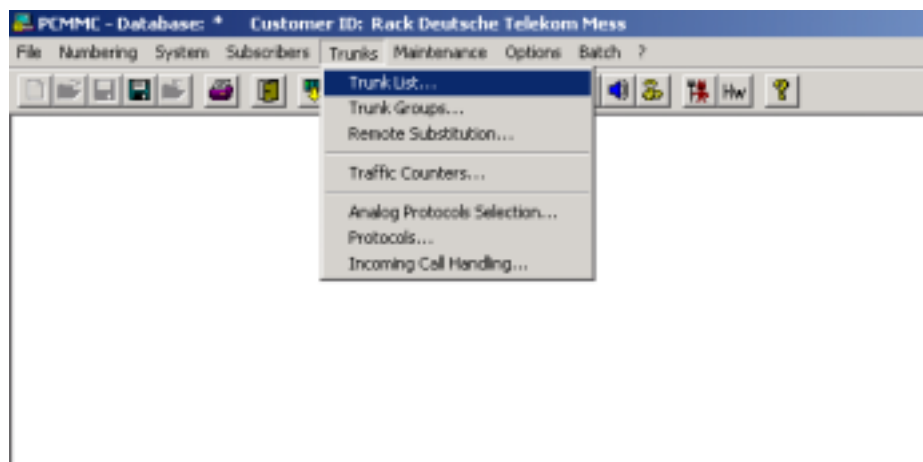
Basic Configuration of an Alcatel OmniOffice-E



As we use static IP address on the phone you have to disable Integrated DHCP Server. This has also be disabled, when running a global DHCP server to have IP phones served.



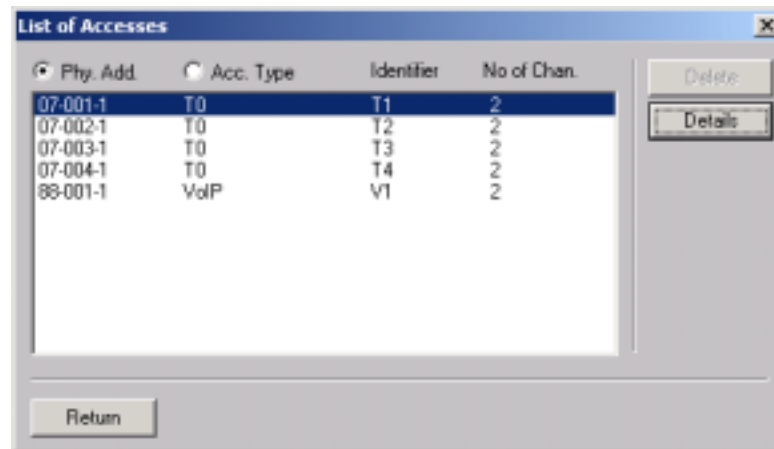
To verify Trunk lists, which I've kept on default setting click on Trunks – Trunk List



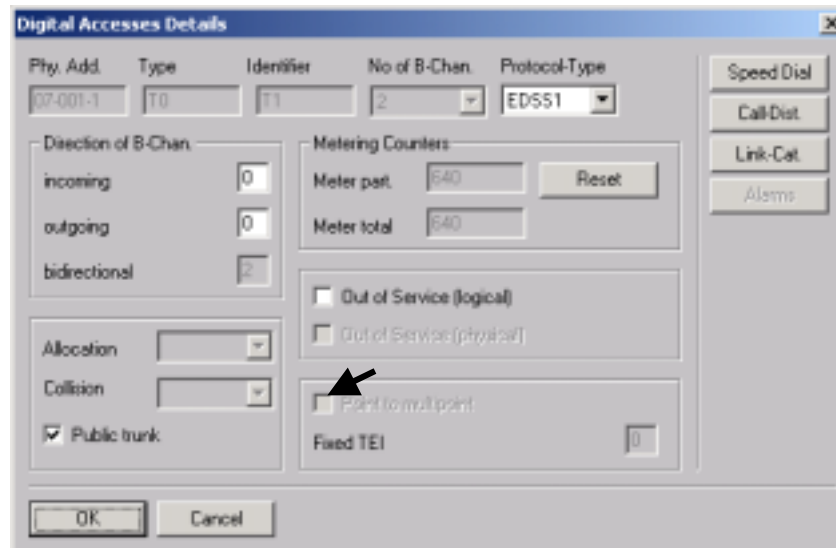
Basic Configuration of an Alcatel OmniOffice-E



Mark the first line, which says on physical Address 07-001-1 and click on details.



Here you will see a slightly difference, because of English MMC version. The common language version would offer you to set Point to multipoint on should be marked in this case.



This is pretty much, what needs to be configured for having the OmniOffice ready to participate on this example.

Basic Configuration of an Alcatel OmniOffice-E



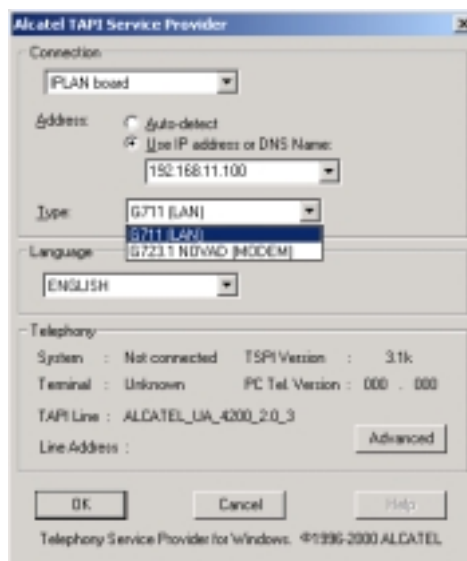
Another feature you would like to show is PIMPhony, an application where you can use your laptop as an IP phone. The installation and configuration is relatively easy.

Doubleclick on setup.exe, select the language and the installation starts.

You will get a welcome window. Just click through, leave a settings in default and get a coffee break.

When the installation has finished you have to configure some basic settings, like Area code, country, local access code, long distance access code. This is primary reflected to the dial properties of your system. When used dialing with modems before, you just have to confirm a setting.

The next step would be configuration settings of the Alcatel Telephony Driver Configuration. This will open up the window "TAPI Service Provider".



You also could use this application with use of a modem attached to your PC, but this is not the purpose of this setup. Don't change any settings on Advanced Button, as the default setting are mostly OK.

The set to do is click on OK in the window above and a new window comes up with Setup Complete. Click on Finish and you are set.

This is the ready-to-dial application. Just type in the Dial field the number and click on dial (next button). However, to use the application I recommed to use a headset connected to the notebooks soundsystem. For demonstration purposes, it's always a good idea to connect the speaker to a 100 Watts active speaker system and you can surprise the audience.

