



## Enable Syslog Services on a PacketShaper

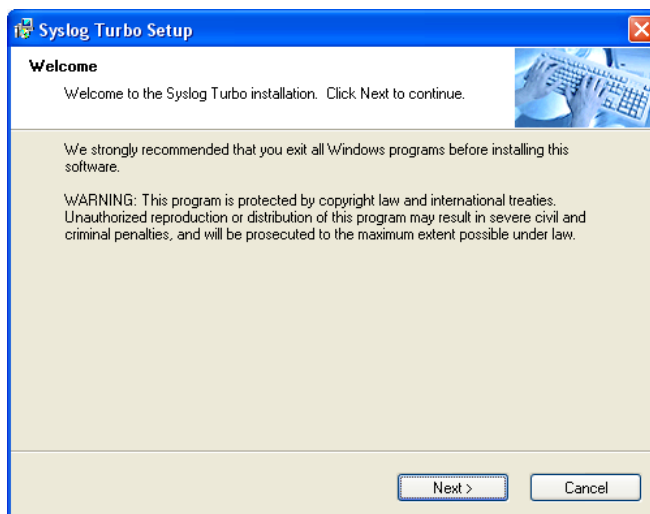
created by: Rainer Bemsel - Version 1.0 - Dated: NOV/08/2009

Syslog can be used in conjunction with the adaptive response and user events feature. For example, when you register an event, you will be asked if you want to send events to Syslog; you can define and register an event that sends a message to a Syslog server when retransmissions rise to 30 percent of your network activity.

Have a Syslog Server up and running. In this example I am using a personal Version of **WEIRD-SOLUTIONS**, called Syslog Turbo

<http://www.weird-solutions.com/product/index.html>

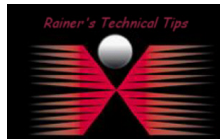
You can download a trial version from their website.



Just execute the downloaded EXE file and walk through the self explaining steps.

To set up logging, you need to:

- 1. Define one or more Syslog servers.**
- 2. Enable the logging feature.**

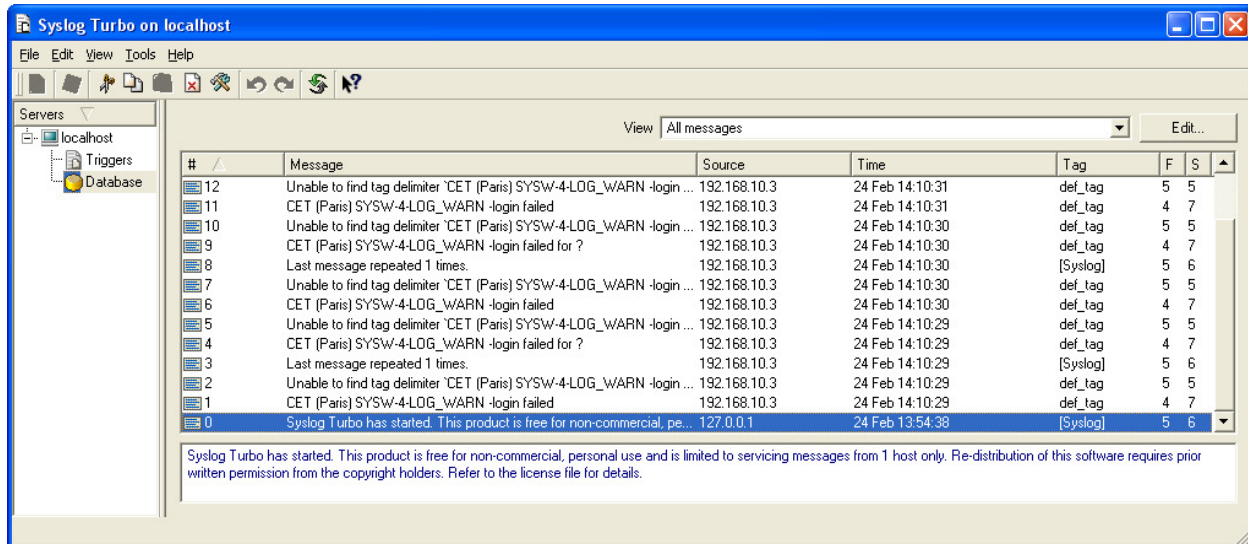


#### DISCLAIMER

*This Technical Tip or TechNote is provided as information only. I cannot make any guarantee, either explicit or implied, as to its accuracy to specific system installations / configurations. Readers should consult each Vendor for further information or support.*

*Although I believe the information provided in this document to be accurate at the time of writing, I reserve the right to modify, update, retract or otherwise change the information contained within for any reason and without notice. This technote has been created after studying the material and / or practical evaluation by myself. All liability for use of the information presented here remains with the user.*

## Define the Syslog Server



To define a Syslog server, use the **setup syslog add** command from the command-line interface as described below. You can add up to four Syslog servers.

Connect to the PacketShaper via Console, Telnet or SSH.

At the CLI execute: `setup syslog add host:<ipaddress> [output:<facility>,<level>] [port:<portnum>] [datetime]`

```
PacketShaper # setup syslog add host:192.168.10.234 output:4,3 datetime
PacketShaper # setup syslog show
      Status: off
      Max Rate: 0
      Total Sent: 0
      Total Lost: 0
Server Address   Facility      Level
-----
192.168.10.234  auth,4       debug, 7
PacketShaper # set syslog on
```

More information about Facility & Debug Codes can be found in the PacketGuide